





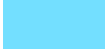


# The main inner Delta plant landscapes

## Level : Plant Landscapes

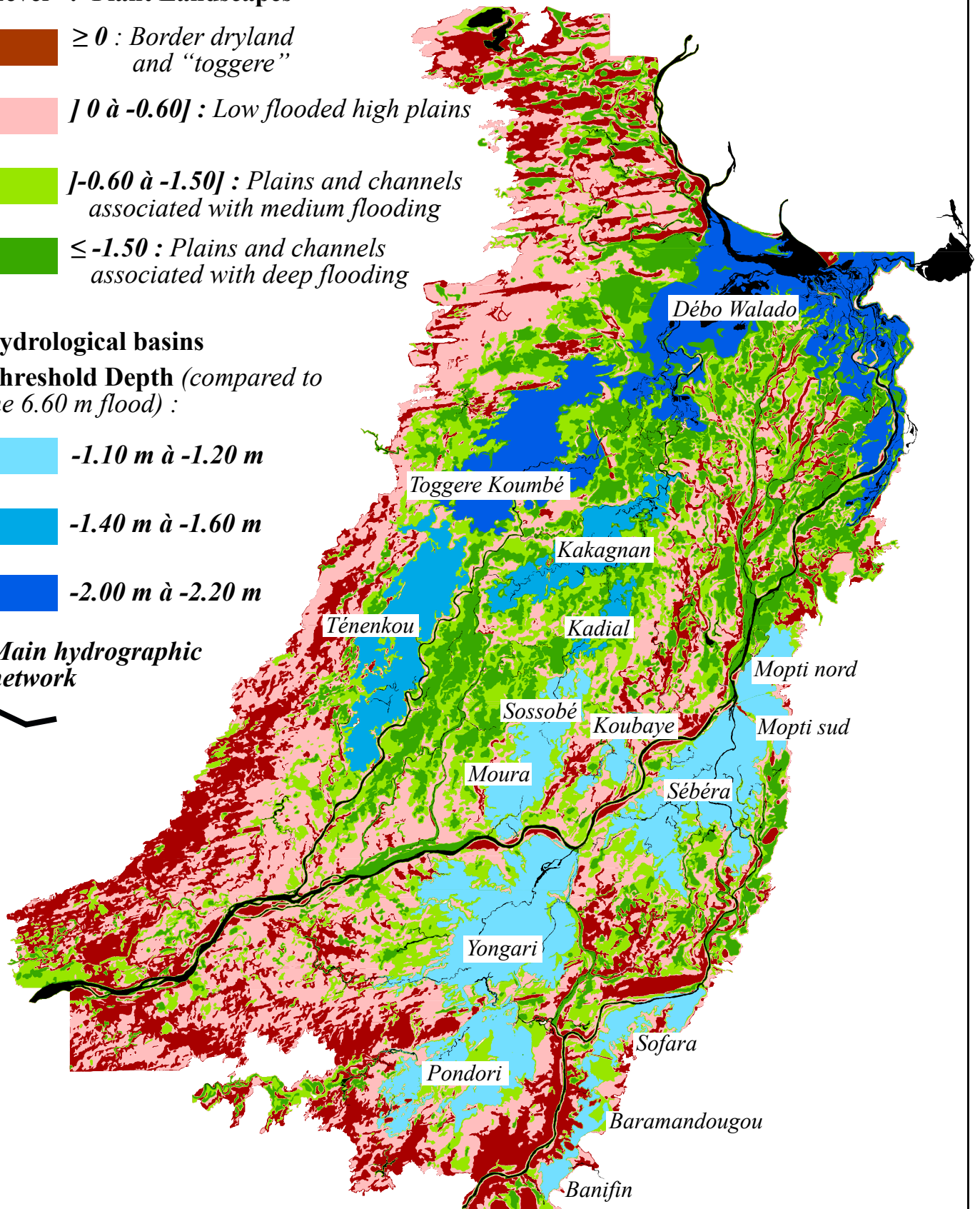
-   $\geq 0$  : Border dryland and "toggere"
-  ] 0 à -0.60] : Low flooded high plains
-  ] -0.60 à -1.50] : Plains and channels associated with medium flooding
-   $\leq -1.50$  : Plains and channels associated with deep flooding

## Hydrological basins

Threshold Depth (compared to the 6.60 m flood) :

-  -1.10 m à -1.20 m
-  -1.40 m à -1.60 m
-  -2.00 m à -2.20 m

## Main hydrographic network



Scale : 1/1 00 000

Jérôme Marie - March 2019